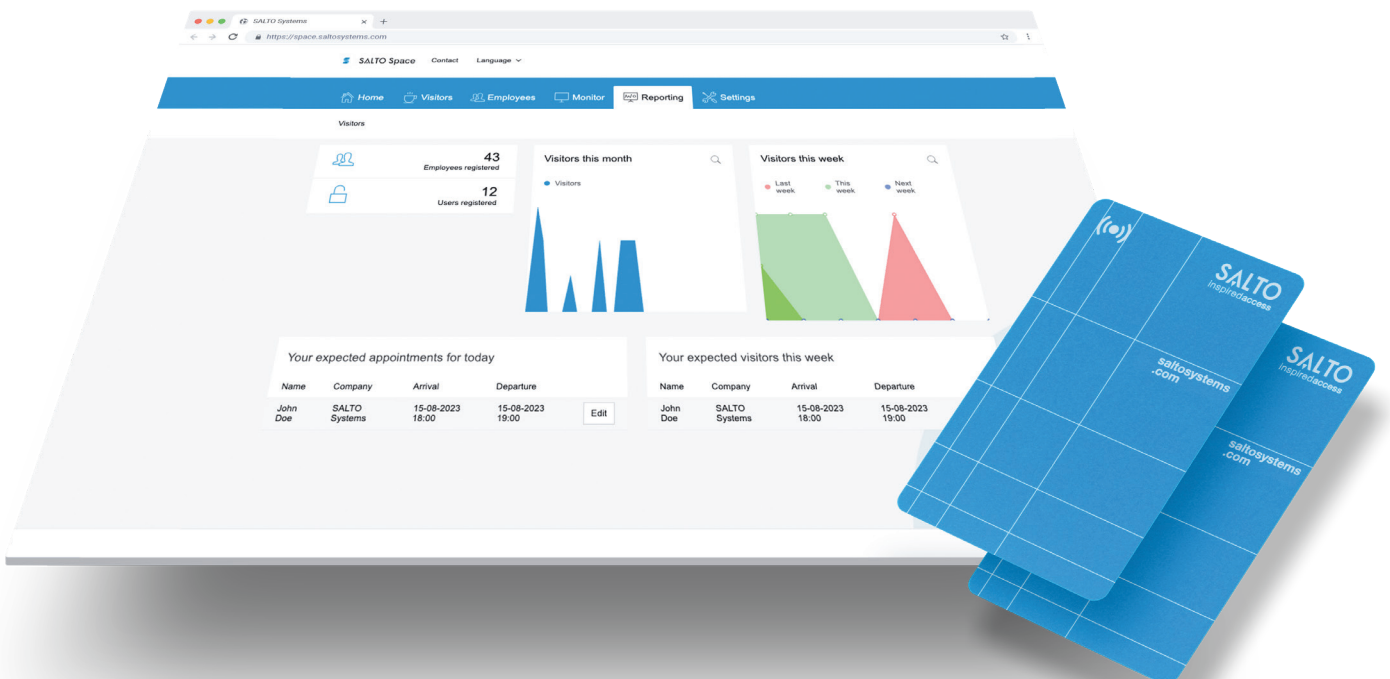


BlueEntrance ID Visitor Management

SALTO's BlueEntrance Space, the advanced ID & Visitor Management solution, which is fully integrated in SALTO Space, and designed to enhance security and provide the most welcoming experience for your guests.



Licenseshheet

Modern, secure, all-in-one identity and visitor management solution. It provides you with an instant and powerful answer to many efficiency and security issues, and strengthens the management of your business workflows.

**saltosystems
.com**

BlueEntrance Space

BlueEntrance Space

Modern, secure, all-in-one identity and visitor management solution. It provides you with an instant and powerful answer to many efficiency and security issues, and strengthens the management of your business workflows.

The three basic licences – Pro, Corporate, and Enterprise – are the starting point for creating a professional setup of business-related visitor management workflows within your organisation. From this base, additional features can be included.

BlueEntrance is scalable, secure, and simplifies the management of companies, visitors, their identifiers, and physical access rights within your organisation.

Pro

Visitor Management

Corporate

Identity Management

Enterprise

Compliance Management

		Pro B001-011	Corporate B001-021	Enterprise B001-031
Integration with SALTO Space	<p>Full integration with the SALTO Space access control system enhances your access management capabilities. This integration enables the synchronisation of employees as hosts for visitor flows; simplifies the management of access passes, mobile digital keys, and PIN code access; and allows for the issuance of default or customised visitor access profiles. It also provides the functionality to open access doors directly from the check-in workflow.</p> <p>Additionally, our corporate and enterprise licences grant you control over employee identifiers and default or selected access profiles.</p>	✓	✓	✓
Web Interface - Customization & Branding	<p>Our system boasts a robust user interface designed to cater to various roles, including front-desk personnel, security personnel, and staff members. Administrators enjoy complete control, with access to emergency features, multi-location settings, data exports, and reporting capabilities.</p> <p>Moreover, our system allows for extensive customisation of the user interface. You can easily upload your logos, choose colour schemes, and incorporate screenshots to tailor the interface to your specific needs.</p>	✓	✓	✓
User provisioning and user access rights	<p>Our system offers a secure and user-friendly setup for the efficient management of user accounts and their permissions within the application. It comes with predefined access requirements to ensure security and ease of use.</p>	✓	✓	✓

BlueEntrance Space

		Pro	Corporate	Enterprise
	DESCRIPTION	B001-011	B001-021	B001-031
Flexible Visitor Registration Workflows	Enjoy the flexibility of five customisable visitor registration workflows: pre-registration by employees, on-site counter registration, invitation management (via dashboard or calendar), precise access profile assignment in SALTO Space, and QR code integration, touchless kiosk, or tablet self-registration or check-in and check-out actions. Badge encoding, label printing, and automatic notifications to hosts and visitors are also included, among other features.	✓	✓	✓
Kiosk Management	Deliver a streamlined visitor experience with efficient check-in and check-out through QR code scanning or self-registration, complete with compliance validation and feedback questionnaires. Issue encoded access keys with appropriate SALTO Space access profiles. Print labels and set up post-check-in notifications to hosts. Upon successful registration and authorisation, unlock entrance doors via kiosk interaction and notify hosts promptly of visitor arrivals.	✓	✓	✓
Presence Monitor	See how many visitors are on-premise at any given time or period. Get up-to-date reports, data, and insights on access incidents, visit details, host activities, and more.	✓	✓	✓
Reporting	See how many visitors are on-premises at any given time, or over a specific period.	✓	✓	✓
Automated Email Notifications	After successful registration, the visitor and host will receive an e-mail confirmation of the visit with a QR code, PIN, or digital key. Visitors will use these details during check-in. A calendar invitation is also sent via e-mail. The host will receive confirmation after the visitor has checked in. All notifications can be set up or adapted to your organisation's requirements.	✓	✓	✓
SMS Notification	Besides the capability to send or receive notifications at pre-registration, local registration, check-in, or check-out by e-mail, this feature also makes it possible for visitors or hosts to send or receive notifications via text message. Moreover, this feature can be set up or adapted to your organisation's requirements.	✓	✓	✓
Employee Management	Efficiently manage and implement all employee changes. Connect effortlessly and securely to MS Azure and manage your employees, their identifiers, and role-based or 'non-standard' access profiles centrally in BlueEntrance.	✗	✓	✓

BlueEntrance Space

		Pro	Corporate	Enterprise
	DESCRIPTION	B001-011	B001-021	B001-031
Premium Integration with MS Azure	Integrate with MS Azure to synchronise employees as a host and employee within BlueEntrance. This feature enables Single Sign-On (SSO) to ensure safe and secure access to the application at all times.	⊗	✓	✓
Visitor ID Pass Templates	Increase security and reflect your brand with a wide range of badge customisation options, including custom fields, employee or visitor information, your logo, company information, background colours, fonts, text, and images.	⊗	✓	✓
Meeting Room Booking	Divide your workplace into spaces and assign a fixed occupancy capacity to each space. In doing so, specific assets, per room, can be defined. When this room is created, employees or hosts can view and book this room for a specific time or period, thereby indicating which assets are desirable for the visit. The necessary rights to enter the reserved room are automatically assigned to employees and visitors.	⊗	✓	✓
Multiple Environments	For global enterprise deployments, BlueEntrance makes it easier to oversee companies and their individual management. Each environment is able to manage its own people (visitors, employees, and contractors), identifiers, and access levels – all separately and securely.	⊗	⊗	✓
Contractor Management	Increase your security and manage your contractor workflow at the highest level. Efficiently control the registration, authentication, validation, and assignment of the correct access rights for the agreed time period. Ensure contractors comply with your security and safety regulations prior to the visit or work period.	⊗	⊗	✓
Validation of Visits	Register visitors and contractors quickly and easily. In this unique feature, we have introduced an additional flow to verify visits. Once the visit is verified by the security officer, the visitor will be announced and will receive 'expected' status.	⊗	⊗	✓
Premium integration with BlueSafety	Validate visitors and contractors via the BlueSafety e-learning platform.	⊗	⊗	✓
Area monitoring	See how many people are in a specific area, which can be defined within BlueEntrance. You have the capability to establish distinct zones, enabling you to monitor the presence of employees or visitors based on reader events.	⊗	⊗	✓

BlueEntrance Space

		Pro B001-011	Corporate B001-021	Enterprise B001-031
DESCRIPTION				
ID registration	Scan visitor or contractor names from their identification documents and verify their validity. This process can be entirely contactless via the self-service kiosk, and is fully automated – no manual intervention from front-desk staff required.	⊗	⊗	✓
Security, privacy, and compliance	Apart from the high level of security offered by BLUEnterance, additional security and GDPR-compliant processes are included to ensure additional safety and peace of mind. These include login based on our Two-Factor Authentication IP Management feature for whitelisting specific IP addresses, and the GDPR Agent running daily for deleting historical personal data.	✓	✓	✓
Combined features from the three basic licenses	Apart from the high level of security offered by BLUEnterance, additional security and GDPR-compliant processes are included to ensure additional safety and peace of mind. These include login based on our Two-Factor Authentication IP Management feature for whitelisting specific IP addresses, and the GDPR Agent running daily for deleting historical personal data.	⊗	⊗	✓
Add-ons				
	Validate visitors and contractors via the BlueSafety e-learning platform.	⊕	⊕	⊕
	Screen visitors or contractors against third-party restricted parties' lists, webservices.	⊕	⊕	⊕
	Interface HRM system	⊕	⊕	⊕
	Interface additional Access Control systems	⊕	⊕	⊕



SALTO Systems.

Get in touch with our team.

Give us a brief summary of your needs, your next project and we'll get back to you.

Spain, UK, France, Germany, Switzerland, The Netherlands, Belgium, Poland, Slovakia, Slovenia, Czech Republic, Denmark, Norway, Sweden, Finland, Italy, Portugal, US (NYC - Atlanta - LV), Canada, Mexico, Costa Rica, Colombia, Puerto Rico, Chile, UAE, India, South Africa, Singapore, China, Hong Kong, Japan, Taiwan, Korea, Vietnam, Australia, New Zealand.

saltosystems
.com